



Finding Birchmere – Access as at 27/03/26

Campsite Location:

Birchmere is located on the southwest corner of the junction where the A3 crosses the M25 (Junction 10). The address **if you are walking in** hasn't changed.

- OS grid reference TQ 075 593 (145)
- W3W For the campsite: [///plank.ports.bring](https://www.google.com/maps/@51.3000000,-0.5000000,15z)
- Postcode: GU23 6QS

Satnavs do not have information about the temporary access arrangements!

Use the directions below via Ockham Bites, Southbound A3 if coming by car.

Car access:

In a significant change, car access to Birchmere is currently only possible from the **southbound A3**, (this is the **opposite side** to the old entrance we previously used.

Point your Satnav towards **Ockham Bites** (Old Lane, Cobham KT11 1NA, [///heavy.master.data](https://www.google.com/maps/@51.3000000,-0.5000000,15z)).

If approaching northbound up the A3 from Guildford/Ripley, you will need to go all the way round the M25 J10/A3 roundabout and come back down the A3 towards Guildford.

Old Lane and the Ockham Bites car park is not long after the M25/A3 junction, so you need to get all the way over to the left-hand lane on the slip road. Look for the sign for “Effingham / Hatchford”, with a brown tourist sign for Ockham Common below it.

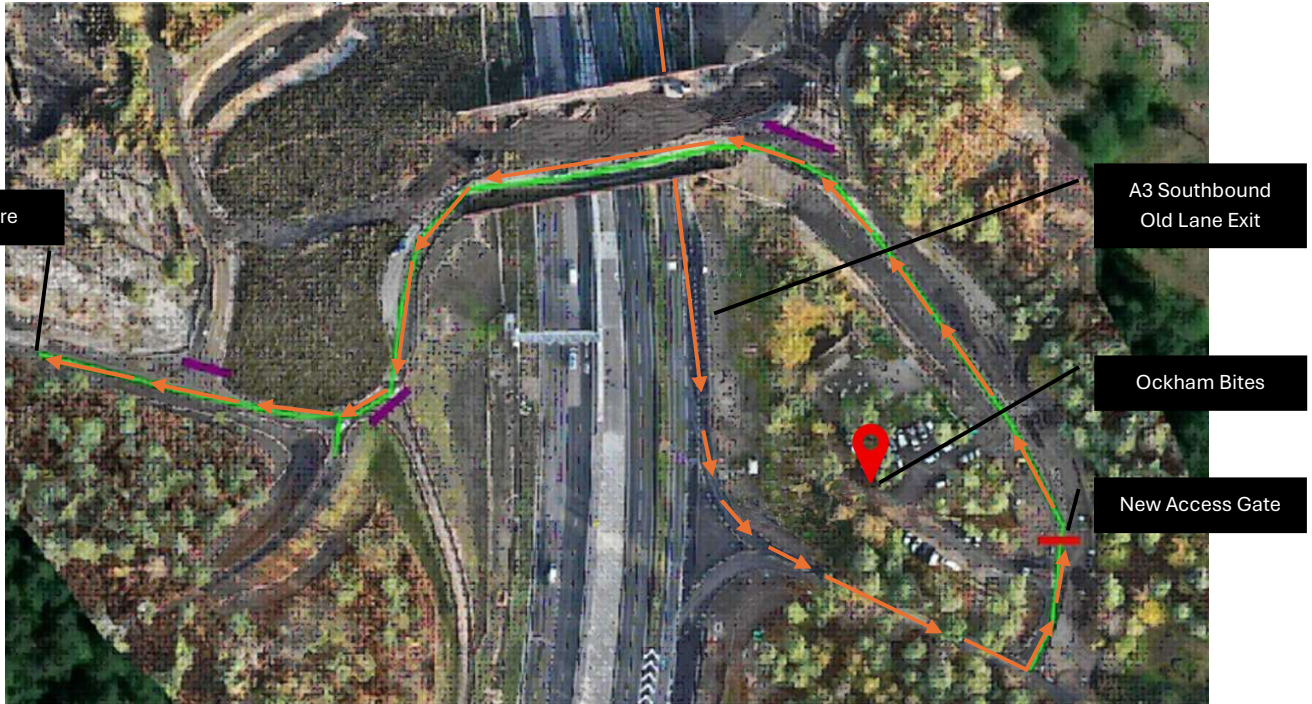


The exit will curve round to the left, then the first turning on your left will be for the Ockham Bites car park (approx. location = [///heavy.master.data](https://www.google.com/maps/@51.3000000,-0.5000000,15z)). That turning has a height restriction on it, you can go through the carpark but if you take the **second turning** it has no height restrictor and leads direct to the access road. The access road will take you up and over the Cockcrow green bridge back to familiar roads if you have been to Birchmere.



Finding Birchmere – Access as at 27/03/26

Follow the road up onto and over the newly opened bridge, crossing the A3. After crossing the Cockcrow bridge follow the winding track until you pass the Surrey Wildlife building on the left. Birchmere is a few yards further on the left.



There are small wooden signs to Pond Farm and Birchmere to help confirm you are on the right track. Note the bridge / route is 2-way traffic on single track shared road.



The access roads are shared spaces with walkers, horses and animals. Please take extra care.

Site speed limit is 10 mph.

Locked out?

At night and during the weekend there may be a padlock on the gates (marked “New Access Gate”, a red line on the above map). The code to open the gate will be given to you before your booking. Can we please ask that the gate is locked once you have passed through it and can you also ask any visitors you have to do the same.